

TYPE 'CDS'

Type 'CDS' Compact Dimension Fuse-Links

Complying with IEC 60269-2:2013 / BS HD 60269-2:2013 / BS 88-2:2013
(Fuse System G)



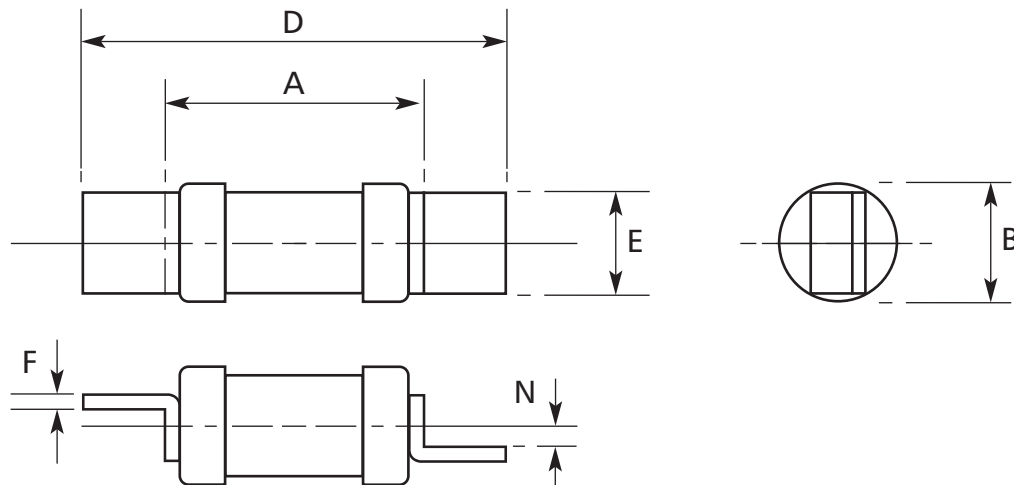
Rated Voltage	415V a.c. 240V a.c.
Current Ratings	2A to 63A
Rated Breaking Capacity	80kA at 415V a.c. 20kA at 240V a.c
Breaking range & utilisation category	gG
Outline Dimensions	SK460
Time/Current characteristics "SS"	SK461
Time/Current characteristics "NS" & "MES"	SK462
Power Dissipation	SK463
Cut-off characteristics	SK464
I ² t characteristics	SK466

Lawson type 'CDS' Compact Dimension Fuse-Links are for use in single or three phase commercial or industrial installations and can be fitted into Clipfit Fuse-Holders or suitable distribution fusegear.

OUTLINE DIMENSIONS

Type 'CDS' Compact Dimension Fuse-Links (Including Motor Circuit Protection)

Issue: 5 Date: 2.9.2021 Approved TH



BS 88-2:2013 Fuse System G	Type Ref.	Rated Voltage (V a.c.)	Current Ratings (A)	Dimensions (mm)					
				A max	B max	D max	E nom	F nom	N nom
E1	SS	240	2, 4, 6, 10, 16 20, 25*, 32*	25	12.7	51	11.5	0.8	3.5
F1	NS	415	2, 4, 6, 10, 16, 20, 25, 32, 20M25*, 20M32*	35.5	14.3	62	11.5	0.8	3.5
F2	NS	415	32M40*, 50*, 63*	35.5	17.5	62	11.5	0.8	3.5
F2	MES	415	10, 16, 20, 25, 32, 40, 50, 63	39	17.5	69	15	1.4	3.5

*NON-STANDARDISED CURRENT RATINGS ADDITIONAL TO BS 88-2:2013 (FUSE SYSTEM G)

IEC 60269-2:2013 / BS HD 60269-2:2013 / BS 88-2:2013 (Fuse System G)

Breaking Range and Utilisation Category "gG"

Rated Voltage 240V a.c. and 415V a.c.

Rated Breaking Capacity - 80 kA at 415V a.c.

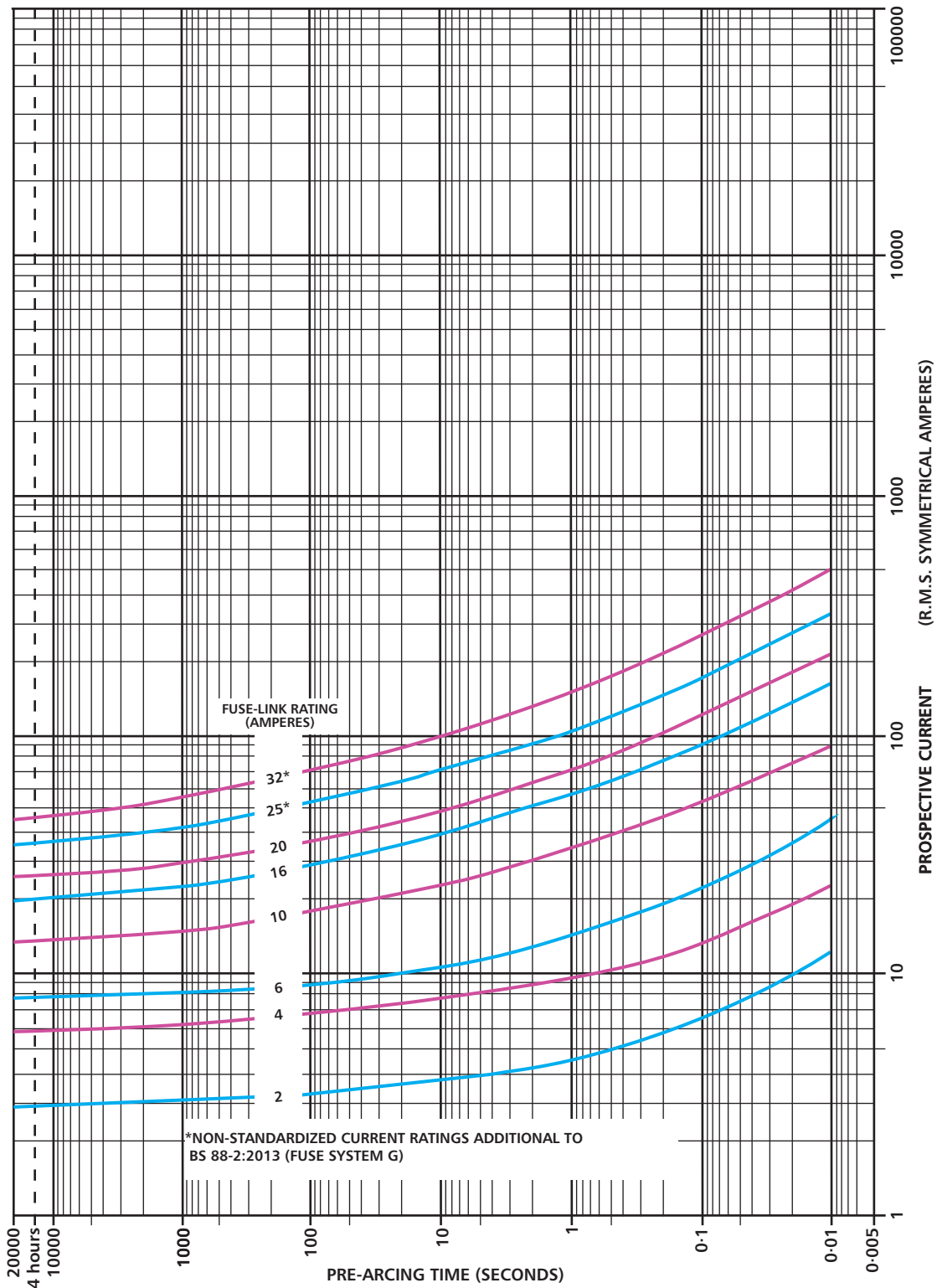
Rated Breaking Capacity - 20 kA at 240V a.c.

ASTA  Certified

TIME/CURRENT CHARACTERISTICS

Type 'CDS' Compact Dimension Fuse-Links, Type Ref. 'SS'

Issue: 5 Date: 2.9.2021 Approved TH



IEC 60269-2:2013 / BS HD 60269-2:2013 / BS 88-2:2013 (Fuse System G)

Breaking Range and Utilisation Category "gG"

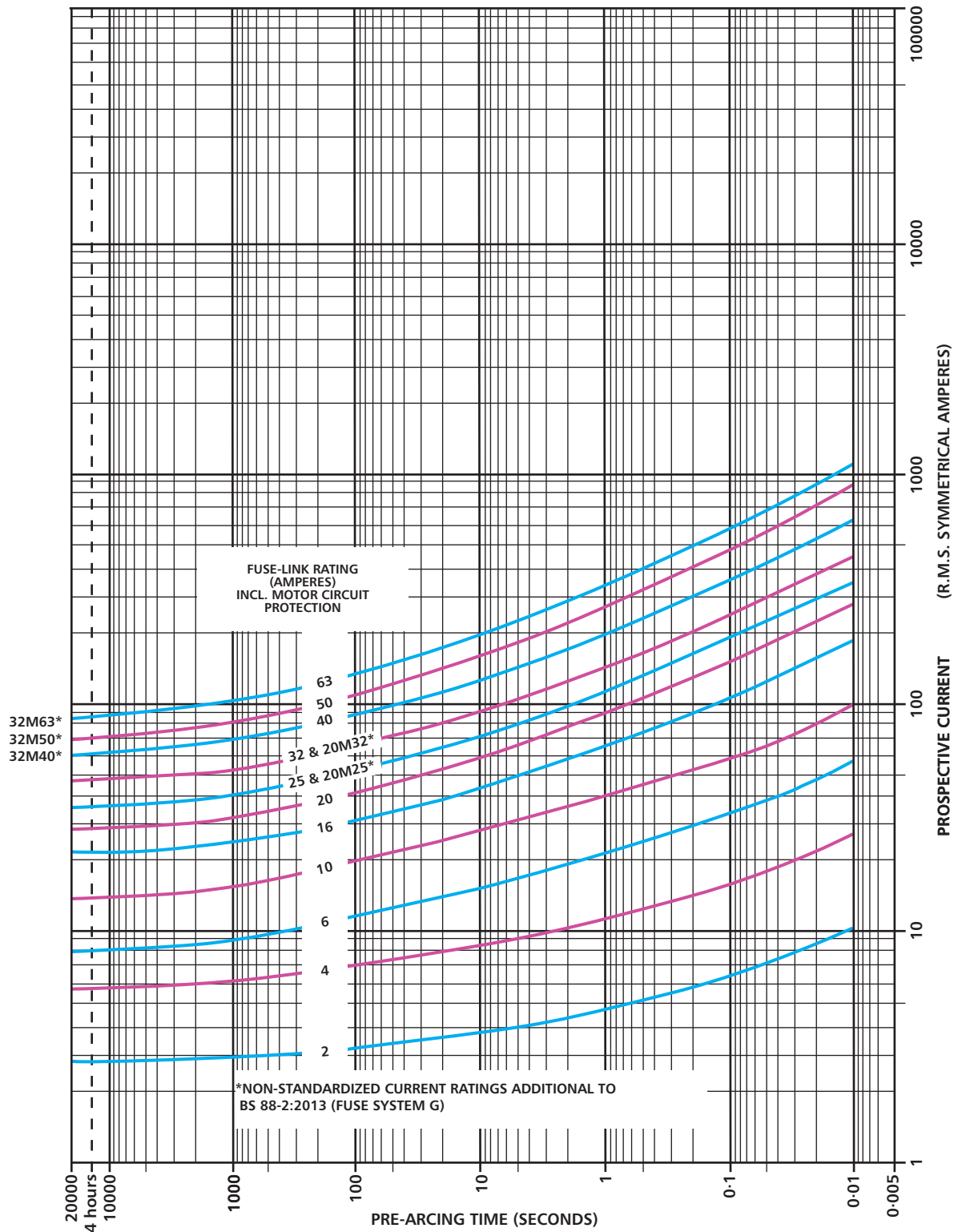
Rated Voltage 240V a.c.

Rated Breaking Capacity - 20 kA at 240V a.c.

TIME/CURRENT CHARACTERISTICS

Type 'CDS' Compact Dimension Fuse-Links, Type Ref. 'NS' & 'MES'

Issue: 5 Date: 2.9.2021 Approved TH



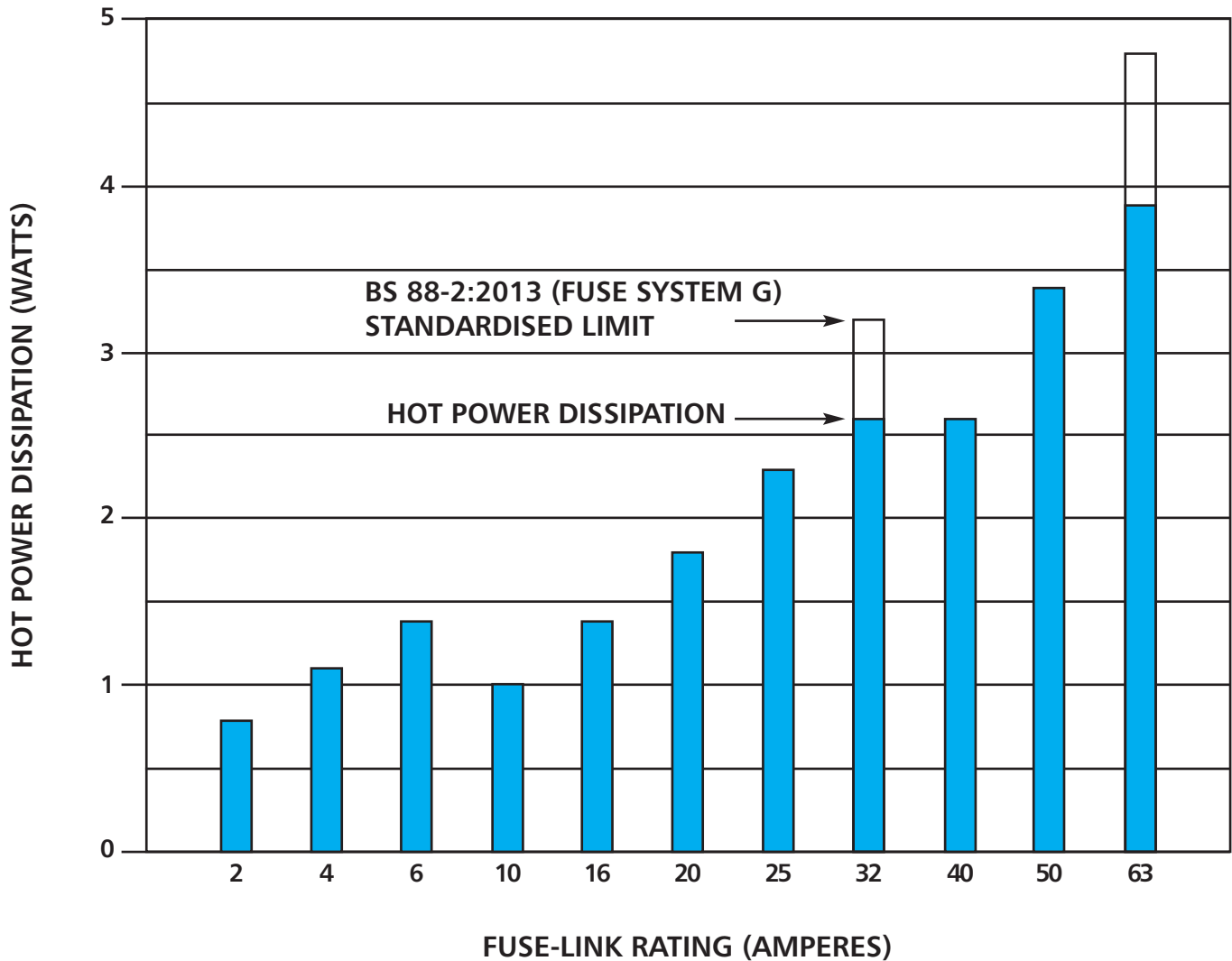
*NON-STANDARDISED CURRENT RATINGS ADDITIONAL TO BS 88-2:2013 (FUSE SYSTEM G)

IEC 60269-2:2013 / BS HD 60269-2:2013 / BS 88-2:2013 (Fuse System G)
 Breaking Range and Utilisation Category "gG"
 Rated Voltage 415V a.c.
 Rated Breaking Capacity - 80 kA at 415V a.c.
 ASTA (20) Certified

POWER DISSIPATION

Type 'CDS' Compact Dimension Fuse-Links, Type Ref. 'NS' & 'MES'

Issue: 5 Date: 2.9.2021 Approved TH



IEC 60269-2:2013 / BS HD 60269-2:2013 / BS 88-2:2013 (Fuse System G)
Breaking Range and Utilisation Category "gG"

Rated Voltage 415V a.c.

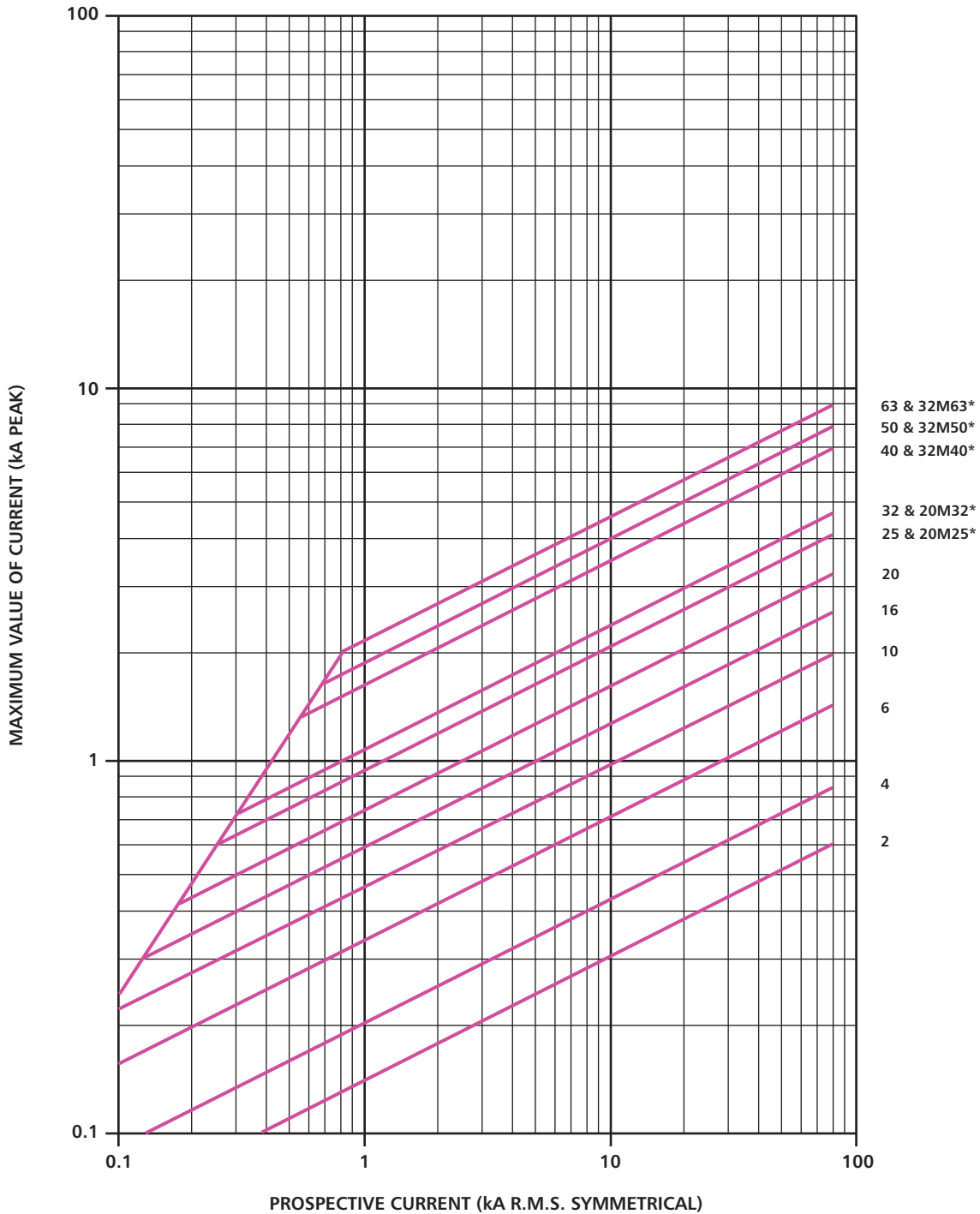
Rated Breaking Capacity - 80 kA at 415V a.c.

ASTA (20) Certified

CUT-OFF CURRENT CHARACTERISTICS

Type 'CDS' Compact Dimension Fuse-Links, Type Ref. 'NS' & 'MES'

Issue: 5 Date: 2.9.2021 Approved TH



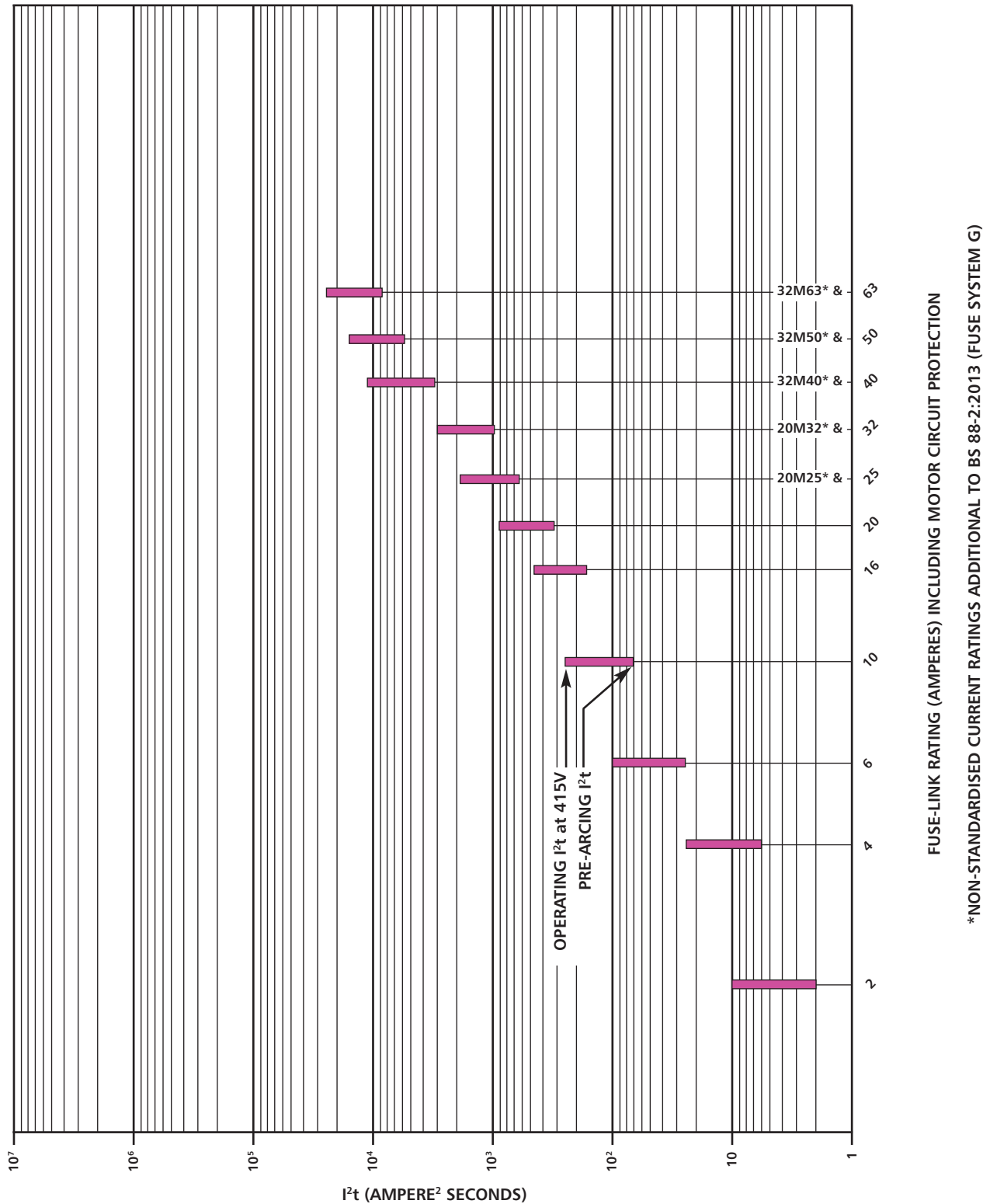
FUSE-LINK RATING (AMPERES) INCLUDING MOTOR CIRCUIT PROTECTION
 *NON-STANDARDISED CURRENT RATINGS ADDITIONAL TO BS 88-2:2013 (FUSE SYSTEM G)

IEC 60269-2:2013 / BS HD 60269-2:2013 / BS 88-2:2013 (Fuse System G)
 Breaking Range and Utilisation Category "gG"
 Rated Voltage 415V a.c.
 Rated Breaking Capacity - 80 kA at 415V a.c.
 ASTA (20) Certified

I²t CHARACTERISTICS

Type 'CDS' Compact Dimension Fuse-Links, Type Ref. 'NS' & 'MES'

Issue: 5 Date: 2.9.2021 Approved TH




IEC 60269-2:2013 / BS HD 60269-2:2013 / BS 88-2:2013 (Fuse System G)

Breaking Range and Utilisation Category "gG"

Rated Voltage 415V a.c.

Rated Breaking Capacity - 80 kA at 415V a.c.

ASTA  Certified